

Personnel Work Baskets: OMB-2 and OMB-4



OMB-2 Work Basket Specs:

- Load Capacity: Two (2) Persons
- Working Limit: 1,100 LBS (499 KG)
- Dimensions: 48" x 48" x 91"
- Tare Weight w Slings: 650 LBS (295 KG)
- Max Gross Weight: 1,750 LBS (794 KG)
- Four Elevated Anchorage Points
- Pad eyes Designed for 3.25MT Shackles
- 5/8" 4-leg Slings w Master Link Assembly

OMB-4 Work Basket Specs:

- Load Capacity: Four (4) Persons
- Working Limit: 1,100 LBS (499 KG)
- Dimensions 80" x 48" x 91"
- Tare Weight w Slings: 875 LBS (397 KG)
- Max Gross Weight: 1,975 LBS (896 KG)
- Four Elevated Anchorage Points
- Pad eyes Designed for 3.25MT Shackles
- 5/8" 4-leg Slings w Master Link Assembly

PRODUCT

OMB-2
OMB-4

DESIGN SPECS

ABS Type Approved
ASME B30.23-2002
OSHA CFR 1926.1431
EN 14502-1:2010

CONTACT

Billy Pugh Company
5878 Agnes Street
Corpus Christi, TX 78406
+1-361-884-9351
bpc@billypugh.com
www.billypugh.com

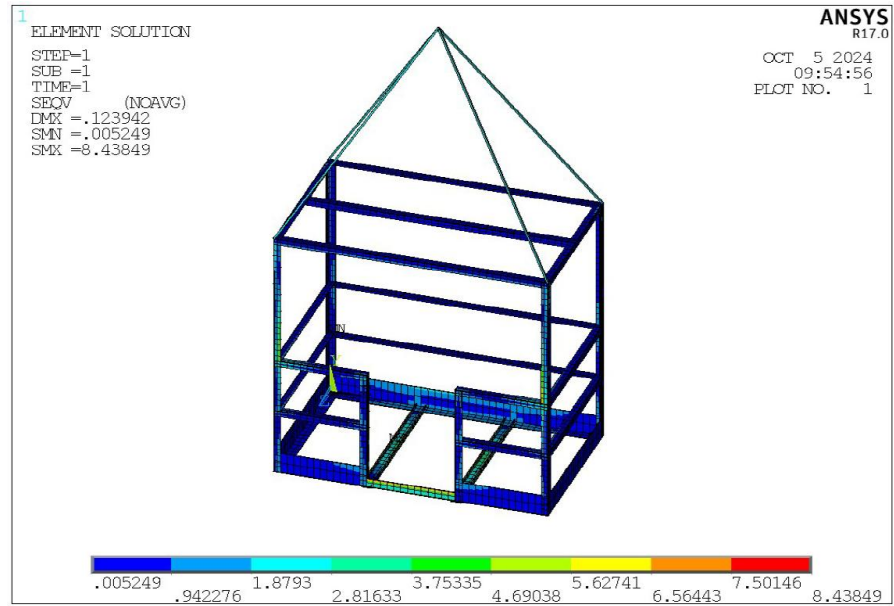
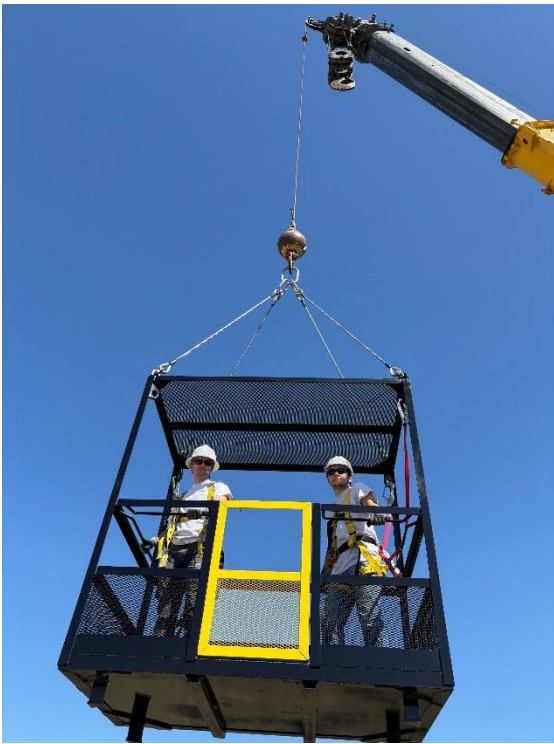


OMB-2 & OMB-4
Work Baskets



bpc
BILLY PUGH COMPANY

OMB-2 and OMB-4 Work Baskets



Click here to access all BPC Product Design Assessments (PDA) and Type Approvals in the ABS Database:

[Type Approval Database Search](#)

OMB-2 & OMB-4
Work Baskets